

Aqua(2,2'-bipyridine- κ^2N,N')(3,5-dinitrobenzoato- κO^1)copper(II) tetrahydrofuran monosolvate

Norbani Abdullah,† M. I. Mohamadin, A. P. Safwan and Edward R. T. Tiekink*

Department of Chemistry, University of Malaya, 50603 Kuala Lumpur, Malaysia
Correspondence e-mail: edward.tiekink@gmail.com

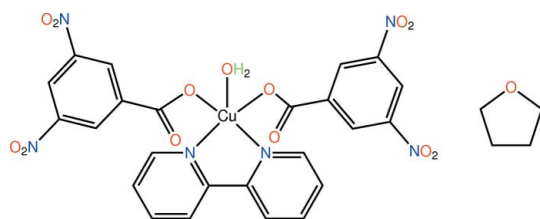
Received 30 July 2010; accepted 30 July 2010

Key indicators: single-crystal X-ray study; $T = 100$ K; mean $\sigma(C-C) = 0.008$ Å; disorder in solvent or counterion; R factor = 0.060; wR factor = 0.134; data-to-parameter ratio = 14.0.

The title complex, $[Cu(C_7H_3N_2O_6)_2(C_{10}H_8N_2)(H_2O)] \cdot C_4H_8O$, features a pentacoordinate Cu^{II} atom bound by two monodentate carboxylate ligands, a bidentate 2,2'-bipyridine molecule [dihedral angle between pyridine rings = $5.0(2)^\circ$] and a water molecule. The resulting N_2O_3 donor set defines a distorted square-pyramidal geometry with the coordinated water molecule in the apical position. In the crystal, the presence of $O-H_w \cdots O_c$ (w = water and c = carbonyl) hydrogen bonding leads to the formation of a supramolecular chain propagating along the c axis, which associates into a double chain *via* $C-H \cdots O$ and $\pi-\pi$ contacts between pyridyl rings [centroid-centroid distance = $3.527(3)$ Å]. The solvent molecules, which are disordered over two orientations in a 0.678(11):0.322(11) ratio, occupy voids defined by the complex molecules and are held in place *via* $C-H \cdots O$ interactions.

Related literature

For background to the study of copper carboxylates, see: Ozair *et al.* (2010). For the preparation, see: Fountain & Hatfield (1965). For additional geometric analysis, see: Addison *et al.* (1984).



† Additional correspondence author, e-mail: norbania@um.edu.my.

Experimental

Crystal data

$[Cu(C_7H_3N_2O_6)_2(C_{10}H_8N_2)(H_2O)] \cdot C_4H_8O$
 $M_r = 732.08$
Orthorhombic, $Pca2_1$
 $a = 19.6424(7)$ Å
 $b = 23.2687(8)$ Å
 $c = 6.5897(2)$ Å

$V = 3011.84(17)$ Å³
 $Z = 4$
Mo $K\alpha$ radiation
 $\mu = 0.81$ mm⁻¹
 $T = 100$ K
 $0.26 \times 0.07 \times 0.07$ mm

Data collection

Bruker SMART APEX CCD diffractometer
Absorption correction: multi-scan (SADABS; Sheldrick, 1996)
 $T_{min} = 0.865$, $T_{max} = 1.000$

25602 measured reflections
6223 independent reflections
5759 reflections with $I > 2\sigma(I)$
 $R_{int} = 0.035$

Refinement

$R[F^2 > 2\sigma(F^2)] = 0.060$
 $wR(F^2) = 0.134$
 $S = 1.28$
6223 reflections
444 parameters
14 restraints

H atoms treated by a mixture of independent and constrained refinement
 $\Delta\rho_{max} = 0.50$ e Å⁻³
 $\Delta\rho_{min} = -0.50$ e Å⁻³
Absolute structure: Flack (1983), 2809 Friedel pairs
Flack parameter: 0.02 (2)

Table 1

Selected bond lengths (Å).

| | | | |
|-------|-----------|--------|-----------|
| Cu—O7 | 1.951 (4) | Cu—N6 | 2.010 (4) |
| Cu—O1 | 1.972 (4) | Cu—O1W | 2.198 (4) |
| Cu—N5 | 2.007 (4) | | |

Table 2

Hydrogen-bond geometry (Å, °).

| $D-H \cdots A$ | $D-H$ | $H \cdots A$ | $D \cdots A$ | $D-H \cdots A$ |
|--|----------|--------------|--------------|----------------|
| O1w—H1w ⁱ ···O2 ⁱ | 0.84 (5) | 2.01 (6) | 2.766 (6) | 150 (7) |
| O1w—H2w ⁱ ···O8 ⁱ | 0.84 (5) | 2.35 (7) | 3.048 (6) | 141 (6) |
| C18—H18 ⁱ ···O8 ⁱⁱ | 0.95 | 2.17 | 3.060 (7) | 155 |
| C21—H21 ⁱ ···O2 ⁱⁱ | 0.95 | 2.41 | 3.087 (7) | 128 |
| C15—H15 ⁱ ···O9 ^j | 0.95 | 2.43 | 3.285 (7) | 150 |
| C1s—H1s ⁱ ···O7 | 0.99 | 2.53 | 3.451 (10) | 155 |
| C3—H3 ⁱ ···O1s | 0.95 | 2.58 | 3.520 (8) | 169 |
| C2s—H2s ⁱ ···O11 | 0.99 | 2.49 | 3.385 (11) | 150 |
| C5—H5 ⁱ ···O4 ⁱⁱⁱ | 0.95 | 2.58 | 3.360 (7) | 140 |
| C12—H12 ⁱ ···O12 ⁱⁱⁱ | 0.95 | 2.43 | 3.263 (7) | 146 |
| C16—H16 ⁱ ···O12 ^{iv} | 0.95 | 2.47 | 3.234 (8) | 138 |

Symmetry codes: (i) $x, y, z - 1$; (ii) $-x + \frac{1}{2}, y, z - \frac{1}{2}$; (iii) $-x + \frac{3}{2}, y, z + \frac{1}{2}$; (iv) $-x + 1, -y + 2, z - \frac{1}{2}$.

Data collection: APEX2 (Bruker, 2009); cell refinement: SAINT (Bruker, 2009); data reduction: SAINT; program(s) used to solve structure: SHELXS97 (Sheldrick, 2008); program(s) used to refine structure: SHELXL97 (Sheldrick, 2008); molecular graphics: ORTEP-3 (Farrugia, 1997) and DIAMOND (Brandenburg, 2006); software used to prepare material for publication: publCIF (Westrip, 2010).

The authors thank the Ministry of Higher Education, Malaysia, for the research grant FP046/2008 C, and they are also grateful to the University of Malaya for support of the crystallographic facility.

Supplementary data and figures for this paper are available from the IUCr electronic archives (Reference: HB5590).

References

- Addison, A. W., Rao, T. N., Reedijk, J., van Rijn, J. & Verschoor, G. C. (1984). *J. Chem. Soc. Dalton Trans.* pp. 1349–1356.
- Brandenburg, K. (2006). *DIAMOND*. Crystal Impact GbR, Bonn, Germany.
- Bruker (2009). *APEX2* and *SAINT*. Bruker AXS Inc., Madison, Wisconsin, USA.
- Farrugia, L. J. (1997). *J. Appl. Cryst.* **30**, 565.
- Flack, H. D. (1983). *Acta Cryst.* **A39**, 876–881.
- Fountain, C. S. & Hatfield, W. E. (1965). *Inorg. Chem.* **4**, 1368–1370.
- Ozair, L. N., Abdullah, N., Khaledi, H. & Tiekink, E. R. T. (2010). *Acta Cryst.* **E66**, m589–m590.
- Sheldrick, G. M. (1996). *SADABS*. University of Göttingen, Germany.
- Sheldrick, G. M. (2008). *Acta Cryst.* **A64**, 112–122.
- Westrip, S. P. (2010). *J. Appl. Cryst.* **43**, 920–925.

supplementary materials

Acta Cryst. (2010). E66, m1055-m1056 [doi:10.1107/S1600536810030436]

Aqua(2,2'-bipyridine- κ^2N,N')(3,5-dinitrobenzoato- κO^1)copper(II) tetrahydrofuran monosolvate

N. Abdullah, M. I. Mohamadin, A. P. Safwan and E. R. T. Tiekink

Comment

The title complex solvate, (I), was characterized as part of on-going structural studies of copper carboxylates and their adducts (Ozair *et al.*, 2010).

The crystallographic asymmetric unit of (I) comprises a copper(II) complex and a solvent tetrahydrofuran (thf) molecule of crystallization in a 1:1 ratio. The molecular structure of the complex in (I) is illustrated in Fig. 1 and selected geometric parameters are collected in Table 1. The Cu atom is penta-coordinate, being coordinated by two O atoms derived from two monodentate carboxylate ligand, two N atoms of the chelating 2,2'-bipyridine ligand, and an O atom derived from the coordinated water molecule. The resulting N₂O₃ donor set defines a square pyramidal geometry as indicated by the value of $\tau = 0.16$ which compares to $\tau = 0$ for an ideal square pyramid and $\tau = 1.0$ for an ideal trigonal bipyramid (Addison *et al.*, 1984). In this description, the coordinated water molecule occupies the apical position and each carboxylate-O atom is *trans* to a pyridine-N atom, Table 2. The four donor atoms defining the square plane have deviations from the least-squares plane through them of -0.089 (2), 0.090 (2), -0.097 (2), and 0.096 (2) Å for atoms O1, O7, N5, and N6, respectively; the r.m.s. deviation for the four atoms is 0.093 Å. The Cu atom lies 0.176 (2) Å out of the square plane in the direction of the O1w atom. Distortions from the ideal geometry are due to the restricted bite distance of the 2,2'-bipyridine ligand [N5–Cu–N6 = 79.95 (18) °] and to the relatively close approach of the carbonyl-O2, O8 atoms. However, the Cu⋯O2, O4 separations of 2.942 (4) and 3.007 (4) Å, respectively, are not considered to represent significant bonding interactions. Under these circumstances, the disparity in the C–O_{carboxylate} and C=O_{carbonyl} bond distances, Table 1, is not as great as might be anticipated for formal C–O_{carboxylate} and C=O_{carbonyl} bonds. This is due to i) the weak interaction formed by the carbonyl-O atoms with the Cu atom, and ii) the pivotal role the carbonyl-O atoms play in the supramolecular association operating in the crystal structure (see below). Each of the carbonyl-O2,O8 atoms lies to the same side of the square plane around the Cu atom and in the opposite direction to the coordinated water molecule. The dihedral angle formed between the two carboxylate aromatic rings is 82.1 (2) °, indicating that they are almost orthogonal to each other. Within the carboxylate ligands, each carboxylate group is effectively co-planar with the aromatic ring to which it is bound, with the C1–O1,O2 carboxylate having the greater twist as seen in the O1–C1–C2–C3 torsion angle of 10.0 (7) °. By contrast, one nitro group in each carboxylate ligand, *i.e.* containing N1 and N4, is significantly twisted out of the plane of the aromatic ring to which it is connected [the O3–N1–C4–C3 and O11–N4–C13–C12 torsion angles are -162.7 (5) and 157.4 (5) °, respectively]. The chelating 2,2'-bipyridine ligand is almost planar with the dihedral angle between the two pyridine rings being 5.0 (2) °; the small twist in the molecule is seen in the N5–C19–C20–N6 torsion angle of -2.6 (7) °.

The most prominent interactions operating in the crystal structure of (I) are O–H⋯O contacts occurring between the hydrogen atoms of the coordinated water molecule and the carbonyl-O atoms of a translationally related molecule; Table 2. As illustrated in Fig. 2, the water-bound hydrogen atoms effectively form a bridge between the adjacent carbonyl atoms resulting in a ten-membered {⋯HOH⋯OCOCuOCO} synthon. The result of this hydrogen bonding is the formation of a supramolecular chain along the *c* axis. Each supramolecular chain is connected into a double chain along *c* with helical topology *via* C–H⋯O contacts whereby two bipyridine-H atoms form interactions with a carbonyl-O of the second chain,

and a third bipyridine-H atom forms a C–H···O contact with a nitro-O within the chain, Fig. 3 and Table 2. This arrangement brings into close proximity the 2,2'-bipyridine molecules which interdigitate, Fig. 3, allowing for the formation of π – π interactions [ring centroid(N6,C20–C24)···ring centroid(N6,C20–C24)]ⁱ = 3.527 (3) Å for i: $-x + 1/2, y, z - 1/2$]. The double chains pack in the *ac* plane to form layers that stack along the *b* axis, Fig. 4. Within each layer, there are voids and these are occupied by the solvent thf molecules which are held in place by C–H···O interactions, Table 2 and Fig. 4. Interactions between layers are primarily of the type C–H···O as detailed in Table 2.

Experimental

Copper(II) acetate monohydrate (Merck; 1.995 g, 0.01 mol) and 3,5-dinitrobenzoic acid (Merck, 4.24 g, 0.02 mol) were reacted in an 1:2 molar ratio hot ethanol (60 ml) for 30 minutes following a literature precedent (Fountain & Hatfield, 1965). The resulting blue powder, [Cu₂(3,5-(NO₂)₂C₆H₃COO)₄], was isolated in 23% yield and reacted with 2,2'-bipyridine (mole ratio = 1:1) in THF (15 ml) at room temperature. Blue-green prisms of (I) formed when the solvent was allowed to slowly evaporate off at room temperature after 2 days.

Refinement

Carbon-bound H-atoms were placed in calculated positions (C–H 0.95 to 0.99 Å) and were included in the refinement in the riding model approximation, with $U_{\text{iso}}(\text{H})$ set to $1.2U_{\text{equiv}}(\text{C})$. The water-bound H-atoms were located in a difference Fourier map but were refined with a distance restraints of O–H = 0.84 ± 0.01 Å and H···H = 1.39 ± 0.05 Å, and with $U_{\text{iso}}(\text{H}) = 1.5U_{\text{eq}}(\text{O})$. The complex was found to crystallize as a 1:1 tetrahydrofuran (thf) solvate. The solvent thf molecule was found to be disordered and resolved over two distinct orientations *via* fractional refinement. The major component of the disorder, with a site occupancy factor = 0.678 (11), was refined with anisotropic displacement parameters but, the non-hydrogen atoms comprising the minor component were refined isotropically. Finally, the distance restraints C–O = 1.40 ± 0.01 Å and C–C = 1.50 ± 0.01 Å were applied to the disordered atoms. While there is an indication of pseudo C-centring (excluding the disordered atoms), there are no counterparts for atoms O3 and O11.

Figures

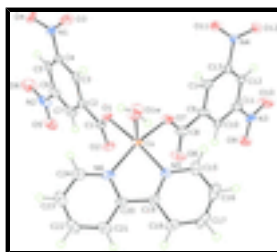


Fig. 1. The molecular structure of (I) showing displacement ellipsoids at the 50% probability level. The disordered thf molecule is not illustrated.

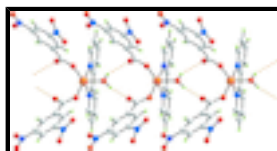


Fig. 2. A portion of the supramolecular chain aligned along the *c* axis found in the crystal structure of (I) mediated by O–H···O hydrogen bonding (orange dashed lines). Colour code: Cu, orange; O, red; N, blue; C, grey; and H, green.

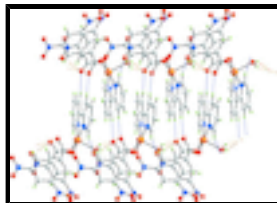


Fig. 3. Double chain with helical topology in (I) mediated by O–H...O and C–H...O contacts shown as orange and blue dashed lines, respectively. Colour code: Cu, orange; O, red; N, blue; C, grey; and H, green.

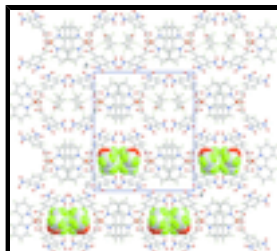


Fig. 4. View of the unit-cell contents of (I) viewed in projection down the *c* axis. The double chains form layers in the *ac* plane which have large voids that are occupied by the solvent thf molecules; only the major component of the disordered molecules are shown. In the lower two layers, the solvent molecules are shown in space filling mode. In the upper two layers, the C–H...O interactions connecting the thf molecules to the layers are shown as green dashed lines. Colour code: Cu, orange; O, red; N, blue; C, grey; and H, green.

Aqua(2,2'-bipyridine- κ^2N,N')(3,5-dinitrobenzoato- κO^1)copper(II) tetrahydrofuran monosolvate

Crystal data

[Cu(C₇H₃N₂O₆)₂(C₁₀H₈N₂)(H₂O)]·C₄H₈O

$M_r = 732.08$

Orthorhombic, *Pca*2₁

Hall symbol: P 2c -2ac

$a = 19.6424$ (7) Å

$b = 23.2687$ (8) Å

$c = 6.5897$ (2) Å

$V = 3011.84$ (17) Å³

$Z = 4$

$F(000) = 1500$

$D_x = 1.614$ Mg m⁻³

Mo $K\alpha$ radiation, $\lambda = 0.71073$ Å

Cell parameters from 7872 reflections

$\theta = 2.6$ – 28.0°

$\mu = 0.81$ mm⁻¹

$T = 100$ K

Prism, green

$0.26 \times 0.07 \times 0.07$ mm

Data collection

Bruker SMART APEX CCD diffractometer

Radiation source: fine-focus sealed tube graphite

ω scans

Absorption correction: multi-scan (*SADABS*; Sheldrick, 1996)

$T_{\min} = 0.865$, $T_{\max} = 1.000$

25602 measured reflections

6223 independent reflections

5759 reflections with $I > 2\sigma(I)$

$R_{\text{int}} = 0.035$

$\theta_{\max} = 26.5^\circ$, $\theta_{\min} = 0.9^\circ$

$h = -24 \rightarrow 23$

$k = -29 \rightarrow 29$

$l = -8 \rightarrow 8$

Refinement

Refinement on F^2

Least-squares matrix: full

$R[F^2 > 2\sigma(F^2)] = 0.060$

Secondary atom site location: difference Fourier map

Hydrogen site location: inferred from neighbouring sites

H atoms treated by a mixture of independent and constrained refinement

supplementary materials

| | |
|--|---|
| $wR(F^2) = 0.134$ | $w = 1/[\sigma^2(F_o^2) + (0.0125P)^2 + 10.1609P]$ |
| $S = 1.28$ | where $P = (F_o^2 + 2F_c^2)/3$ |
| 6223 reflections | $(\Delta/\sigma)_{\max} < 0.001$ |
| 444 parameters | $\Delta\rho_{\max} = 0.50 \text{ e } \text{\AA}^{-3}$ |
| 14 restraints | $\Delta\rho_{\min} = -0.50 \text{ e } \text{\AA}^{-3}$ |
| Primary atom site location: structure-invariant direct methods | Absolute structure: Flack (1983), 2809 Friedel pairs Flack parameter: 0.02 (2) |

Special details

Geometry. All s.u.'s (except the s.u. in the dihedral angle between two l.s. planes) are estimated using the full covariance matrix. The cell s.u.'s are taken into account individually in the estimation of s.u.'s in distances, angles and torsion angles; correlations between s.u.'s in cell parameters are only used when they are defined by crystal symmetry. An approximate (isotropic) treatment of cell s.u.'s is used for estimating s.u.'s involving l.s. planes.

Refinement. Refinement of F^2 against ALL reflections. The weighted R -factor wR and goodness of fit S are based on F^2 , conventional R -factors R are based on F , with F set to zero for negative F^2 . The threshold expression of $F^2 > 2\sigma(F^2)$ is used only for calculating R -factors(gt) *etc.* and is not relevant to the choice of reflections for refinement. R -factors based on F^2 are statistically about twice as large as those based on F , and R -factors based on ALL data will be even larger.

Fractional atomic coordinates and isotropic or equivalent isotropic displacement parameters (\AA^2)

| | x | y | z | $U_{\text{iso}}^*/U_{\text{eq}}$ | Occ. (<1) |
|-----|--------------|--------------|--------------|----------------------------------|-----------|
| Cu | 0.42505 (3) | 0.74892 (3) | 0.81422 (13) | 0.01710 (13) | |
| O1 | 0.48462 (18) | 0.68415 (15) | 0.8897 (5) | 0.0203 (8) | |
| O2 | 0.43340 (18) | 0.68207 (18) | 1.1923 (6) | 0.0276 (9) | |
| O3 | 0.7080 (2) | 0.59152 (17) | 0.8280 (8) | 0.0349 (10) | |
| O4 | 0.7241 (2) | 0.51293 (17) | 0.9989 (6) | 0.0277 (9) | |
| O5 | 0.5108 (2) | 0.5410 (2) | 1.6840 (6) | 0.0362 (11) | |
| O6 | 0.6025 (2) | 0.4906 (2) | 1.6345 (8) | 0.0475 (13) | |
| O7 | 0.49031 (18) | 0.80342 (17) | 0.9272 (6) | 0.0223 (8) | |
| O8 | 0.41911 (19) | 0.8246 (2) | 1.1836 (6) | 0.0313 (10) | |
| O9 | 0.4959 (2) | 0.95628 (19) | 1.7149 (7) | 0.0326 (10) | |
| O10 | 0.5952 (2) | 0.9953 (2) | 1.6972 (8) | 0.0447 (13) | |
| O11 | 0.7198 (2) | 0.88618 (18) | 0.9376 (7) | 0.0344 (10) | |
| O12 | 0.73480 (19) | 0.96655 (16) | 1.0991 (7) | 0.0300 (10) | |
| O1W | 0.4763 (3) | 0.7479 (2) | 0.5176 (6) | 0.0417 (11) | |
| H2W | 0.450 (3) | 0.774 (2) | 0.478 (11) | 0.063* | |
| H1W | 0.478 (4) | 0.723 (2) | 0.426 (8) | 0.063* | |
| N1 | 0.6927 (2) | 0.5575 (2) | 0.9613 (7) | 0.0232 (10) | |
| N2 | 0.5602 (3) | 0.5278 (2) | 1.5819 (8) | 0.0303 (11) | |
| N3 | 0.5503 (2) | 0.9650 (2) | 1.6327 (7) | 0.0240 (10) | |
| N4 | 0.7016 (2) | 0.92304 (18) | 1.0584 (8) | 0.0209 (10) | |
| N5 | 0.3550 (2) | 0.80942 (19) | 0.7545 (6) | 0.0169 (9) | |
| N6 | 0.3428 (2) | 0.6991 (2) | 0.7701 (6) | 0.0198 (10) | |
| C1 | 0.4777 (2) | 0.6669 (2) | 1.0699 (8) | 0.0192 (11) | |
| C2 | 0.5301 (3) | 0.6231 (2) | 1.1368 (8) | 0.0180 (11) | |

| | | | | | |
|------|------------|------------|-------------|--------------|------------|
| C3 | 0.5867 (3) | 0.6110 (2) | 1.0177 (8) | 0.0173 (10) | |
| H3 | 0.5934 | 0.6296 | 0.8911 | 0.021* | |
| C4 | 0.6333 (2) | 0.5706 (2) | 1.0894 (8) | 0.0175 (10) | |
| C5 | 0.6267 (3) | 0.5431 (2) | 1.2735 (8) | 0.0199 (12) | |
| H5 | 0.6593 | 0.5159 | 1.3196 | 0.024* | |
| C6 | 0.5703 (3) | 0.5571 (2) | 1.3865 (8) | 0.0243 (12) | |
| C7 | 0.5218 (3) | 0.5960 (2) | 1.3246 (10) | 0.0248 (11) | |
| H7 | 0.4836 | 0.6043 | 1.4077 | 0.030* | |
| C8 | 0.4735 (3) | 0.8296 (2) | 1.0928 (8) | 0.0225 (11) | |
| C9 | 0.5270 (3) | 0.8696 (2) | 1.1773 (8) | 0.0210 (11) | |
| C10 | 0.5142 (3) | 0.8988 (2) | 1.3576 (8) | 0.0181 (11) | |
| H10 | 0.4721 | 0.8937 | 1.4260 | 0.022* | |
| C11 | 0.5628 (3) | 0.9350 (2) | 1.4367 (9) | 0.0219 (11) | |
| C12 | 0.6256 (3) | 0.9422 (2) | 1.3450 (8) | 0.0178 (11) | |
| H12 | 0.6599 | 0.9654 | 1.4048 | 0.021* | |
| C13 | 0.6362 (3) | 0.9144 (2) | 1.1637 (9) | 0.0205 (11) | |
| C14 | 0.5891 (2) | 0.8771 (2) | 1.0798 (8) | 0.0178 (10) | |
| H14 | 0.5989 | 0.8570 | 0.9579 | 0.021* | |
| C15 | 0.3682 (3) | 0.8653 (2) | 0.7354 (8) | 0.0257 (12) | |
| H15 | 0.4139 | 0.8784 | 0.7420 | 0.031* | |
| C16 | 0.3158 (4) | 0.9047 (3) | 0.7059 (9) | 0.0345 (15) | |
| H16 | 0.3260 | 0.9444 | 0.6915 | 0.041* | |
| C17 | 0.2505 (4) | 0.8867 (3) | 0.6977 (9) | 0.0320 (14) | |
| H17 | 0.2147 | 0.9136 | 0.6792 | 0.038* | |
| C18 | 0.2362 (3) | 0.8287 (3) | 0.7166 (8) | 0.0252 (12) | |
| H18 | 0.1906 | 0.8152 | 0.7129 | 0.030* | |
| C19 | 0.2910 (3) | 0.7905 (2) | 0.7414 (7) | 0.0161 (10) | |
| C20 | 0.2837 (3) | 0.7281 (2) | 0.7550 (7) | 0.0187 (11) | |
| C21 | 0.2213 (3) | 0.6990 (3) | 0.7491 (8) | 0.0256 (12) | |
| H21 | 0.1797 | 0.7197 | 0.7411 | 0.031* | |
| C22 | 0.2212 (3) | 0.6388 (3) | 0.7554 (8) | 0.0289 (13) | |
| H22 | 0.1795 | 0.6182 | 0.7526 | 0.035* | |
| C23 | 0.2816 (3) | 0.6102 (3) | 0.7655 (8) | 0.0292 (13) | |
| H23 | 0.2826 | 0.5694 | 0.7675 | 0.035* | |
| C24 | 0.3417 (3) | 0.6415 (3) | 0.7727 (7) | 0.0259 (13) | |
| H24 | 0.3836 | 0.6213 | 0.7799 | 0.031* | |
| O1S | 0.6126 (3) | 0.6981 (3) | 0.5879 (10) | 0.0375 (19)* | 0.678 (11) |
| C1S | 0.6344 (5) | 0.7402 (3) | 0.7275 (13) | 0.029 (2)* | 0.678 (11) |
| H1S1 | 0.6734 | 0.7259 | 0.8083 | 0.035* | 0.678 (11) |
| H1S2 | 0.5970 | 0.7507 | 0.8211 | 0.035* | 0.678 (11) |
| C2S | 0.6551 (5) | 0.7910 (4) | 0.6005 (15) | 0.039 (2)* | 0.678 (11) |
| H2S1 | 0.6153 | 0.8155 | 0.5682 | 0.047* | 0.678 (11) |
| H2S2 | 0.6898 | 0.8145 | 0.6711 | 0.047* | 0.678 (11) |
| C4S | 0.6573 (6) | 0.7039 (5) | 0.4224 (18) | 0.059 (3)* | 0.678 (11) |
| H4S1 | 0.6331 | 0.6944 | 0.2950 | 0.070* | 0.678 (11) |
| H4S2 | 0.6958 | 0.6767 | 0.4377 | 0.070* | 0.678 (11) |
| C3S | 0.6839 (6) | 0.7640 (4) | 0.4117 (17) | 0.053 (3)* | 0.678 (11) |
| H3S1 | 0.6675 | 0.7839 | 0.2882 | 0.064* | 0.678 (11) |
| H3S2 | 0.7343 | 0.7647 | 0.4132 | 0.064* | 0.678 (11) |

supplementary materials

| | | | | | |
|------|-------------|------------|-----------|------------|------------|
| O2S | 0.6819 (9) | 0.7085 (7) | 0.296 (3) | 0.070 (6)* | 0.322 (11) |
| C5S | 0.6454 (10) | 0.7603 (7) | 0.299 (3) | 0.041 (5)* | 0.322 (11) |
| H5S1 | 0.5993 | 0.7537 | 0.2429 | 0.049* | 0.322 (11) |
| H5S2 | 0.6686 | 0.7888 | 0.2115 | 0.049* | 0.322 (11) |
| C8S | 0.6827 (10) | 0.6886 (8) | 0.496 (2) | 0.032 (5)* | 0.322 (11) |
| H8S1 | 0.7301 | 0.6874 | 0.5465 | 0.038* | 0.322 (11) |
| H8S2 | 0.6638 | 0.6492 | 0.5013 | 0.038* | 0.322 (11) |
| C7S | 0.6406 (14) | 0.7281 (9) | 0.626 (4) | 0.058 (7)* | 0.322 (11) |
| H7S1 | 0.5940 | 0.7128 | 0.6442 | 0.069* | 0.322 (11) |
| H7S2 | 0.6618 | 0.7333 | 0.7612 | 0.069* | 0.322 (11) |
| C6S | 0.6395 (15) | 0.7838 (9) | 0.511 (3) | 0.058 (7)* | 0.322 (11) |
| H6S1 | 0.6785 | 0.8088 | 0.5462 | 0.070* | 0.322 (11) |
| H6S2 | 0.5963 | 0.8051 | 0.5310 | 0.070* | 0.322 (11) |

Atomic displacement parameters (\AA^2)

| | U^{11} | U^{22} | U^{33} | U^{12} | U^{13} | U^{23} |
|-----|-------------|-------------|------------|--------------|--------------|--------------|
| Cu | 0.0121 (2) | 0.0260 (3) | 0.0132 (2) | 0.0013 (3) | -0.0011 (3) | -0.0022 (3) |
| O1 | 0.0154 (18) | 0.0217 (19) | 0.024 (2) | 0.0063 (15) | -0.0003 (14) | -0.0014 (15) |
| O2 | 0.0168 (19) | 0.040 (2) | 0.026 (2) | 0.0046 (17) | -0.0002 (16) | -0.0089 (18) |
| O3 | 0.031 (2) | 0.035 (2) | 0.039 (2) | 0.0110 (17) | 0.013 (2) | 0.012 (2) |
| O4 | 0.027 (2) | 0.022 (2) | 0.034 (2) | 0.0091 (17) | -0.0020 (18) | -0.0005 (17) |
| O5 | 0.039 (2) | 0.043 (3) | 0.026 (2) | -0.012 (2) | 0.007 (2) | 0.0052 (19) |
| O6 | 0.037 (3) | 0.054 (3) | 0.051 (3) | 0.001 (2) | -0.006 (2) | 0.032 (3) |
| O7 | 0.0161 (18) | 0.030 (2) | 0.021 (2) | 0.0004 (16) | -0.0012 (15) | -0.0019 (17) |
| O8 | 0.0181 (19) | 0.054 (3) | 0.022 (2) | -0.0079 (19) | 0.0015 (17) | -0.0053 (19) |
| O9 | 0.029 (2) | 0.037 (2) | 0.031 (2) | -0.0051 (19) | 0.0120 (19) | -0.0090 (19) |
| O10 | 0.024 (2) | 0.059 (3) | 0.051 (3) | -0.013 (2) | 0.009 (2) | -0.029 (3) |
| O11 | 0.024 (2) | 0.029 (2) | 0.050 (3) | -0.0030 (18) | 0.016 (2) | -0.010 (2) |
| O12 | 0.023 (2) | 0.0222 (19) | 0.045 (3) | -0.0030 (16) | 0.0079 (19) | -0.0043 (19) |
| O1W | 0.063 (3) | 0.041 (3) | 0.021 (2) | 0.009 (3) | 0.016 (2) | -0.002 (2) |
| N1 | 0.019 (2) | 0.023 (2) | 0.027 (2) | 0.0073 (19) | -0.0023 (19) | -0.003 (2) |
| N2 | 0.028 (3) | 0.039 (3) | 0.024 (3) | -0.011 (2) | 0.000 (2) | 0.007 (2) |
| N3 | 0.019 (2) | 0.028 (3) | 0.025 (2) | 0.001 (2) | 0.004 (2) | -0.006 (2) |
| N4 | 0.0121 (19) | 0.016 (2) | 0.035 (3) | 0.0009 (17) | 0.0024 (19) | -0.001 (2) |
| N5 | 0.018 (2) | 0.022 (2) | 0.010 (2) | 0.0017 (17) | -0.0014 (16) | 0.0017 (17) |
| N6 | 0.017 (2) | 0.030 (2) | 0.012 (2) | 0.0038 (18) | -0.0020 (17) | 0.0009 (17) |
| C1 | 0.014 (2) | 0.026 (3) | 0.017 (3) | -0.001 (2) | -0.001 (2) | -0.009 (2) |
| C2 | 0.019 (2) | 0.019 (3) | 0.017 (3) | -0.002 (2) | 0.001 (2) | -0.007 (2) |
| C3 | 0.019 (2) | 0.016 (2) | 0.017 (2) | -0.004 (2) | -0.004 (2) | -0.009 (2) |
| C4 | 0.014 (2) | 0.016 (2) | 0.022 (3) | -0.0012 (19) | 0.000 (2) | -0.007 (2) |
| C5 | 0.023 (3) | 0.011 (2) | 0.026 (3) | -0.0038 (19) | -0.008 (2) | -0.004 (2) |
| C6 | 0.024 (3) | 0.030 (3) | 0.019 (2) | -0.008 (2) | -0.003 (2) | 0.005 (2) |
| C7 | 0.022 (2) | 0.034 (3) | 0.018 (3) | -0.005 (2) | 0.000 (3) | -0.003 (3) |
| C8 | 0.018 (3) | 0.033 (3) | 0.017 (3) | -0.001 (2) | -0.005 (2) | 0.002 (2) |
| C9 | 0.013 (2) | 0.032 (3) | 0.018 (3) | 0.001 (2) | -0.002 (2) | 0.010 (2) |
| C10 | 0.014 (2) | 0.020 (2) | 0.020 (3) | 0.000 (2) | 0.001 (2) | 0.001 (2) |
| C11 | 0.016 (2) | 0.027 (3) | 0.023 (3) | 0.002 (2) | -0.001 (2) | -0.004 (2) |

| | | | | | | |
|-----|-----------|-----------|-----------|-------------|--------------|------------|
| C12 | 0.015 (2) | 0.017 (2) | 0.021 (3) | 0.0021 (18) | -0.001 (2) | -0.001 (2) |
| C13 | 0.016 (2) | 0.016 (2) | 0.030 (3) | 0.001 (2) | 0.000 (2) | 0.011 (2) |
| C14 | 0.018 (2) | 0.017 (2) | 0.018 (2) | 0.006 (2) | -0.002 (2) | 0.005 (2) |
| C15 | 0.036 (3) | 0.023 (3) | 0.018 (2) | -0.002 (2) | -0.006 (2) | -0.001 (2) |
| C16 | 0.058 (4) | 0.023 (3) | 0.022 (3) | 0.013 (3) | -0.009 (3) | 0.004 (2) |
| C17 | 0.045 (4) | 0.034 (3) | 0.017 (3) | 0.024 (3) | -0.010 (3) | -0.003 (2) |
| C18 | 0.022 (3) | 0.042 (3) | 0.011 (2) | 0.012 (2) | -0.005 (2) | -0.005 (2) |
| C19 | 0.020 (3) | 0.023 (3) | 0.006 (2) | 0.006 (2) | -0.0025 (19) | -0.003 (2) |
| C20 | 0.014 (2) | 0.032 (3) | 0.010 (2) | 0.002 (2) | 0.0001 (18) | -0.008 (2) |
| C21 | 0.021 (3) | 0.047 (3) | 0.010 (2) | -0.008 (3) | -0.001 (2) | -0.009 (2) |
| C22 | 0.032 (3) | 0.040 (3) | 0.014 (3) | -0.015 (3) | -0.004 (2) | -0.003 (2) |
| C23 | 0.045 (3) | 0.029 (3) | 0.014 (3) | -0.013 (3) | -0.003 (2) | 0.000 (2) |
| C24 | 0.024 (3) | 0.040 (3) | 0.013 (3) | 0.000 (2) | 0.000 (2) | -0.005 (2) |

Geometric parameters (Å, °)

| | | | |
|---------|-----------|----------|------------|
| Cu—O7 | 1.951 (4) | C13—C14 | 1.384 (7) |
| Cu—O1 | 1.972 (4) | C14—H14 | 0.9500 |
| Cu—N5 | 2.007 (4) | C15—C16 | 1.392 (8) |
| Cu—N6 | 2.010 (4) | C15—H15 | 0.9500 |
| Cu—O1W | 2.198 (4) | C16—C17 | 1.351 (10) |
| C1—O1 | 1.261 (6) | C16—H16 | 0.9500 |
| C1—O2 | 1.238 (6) | C17—C18 | 1.382 (8) |
| O3—N1 | 1.220 (6) | C17—H17 | 0.9500 |
| O4—N1 | 1.231 (6) | C18—C19 | 1.406 (7) |
| O5—N2 | 1.221 (7) | C18—H18 | 0.9500 |
| O6—N2 | 1.248 (7) | C19—C20 | 1.461 (8) |
| C8—O7 | 1.293 (7) | C20—C21 | 1.402 (7) |
| C8—O8 | 1.230 (6) | C21—C22 | 1.400 (8) |
| O9—N3 | 1.214 (6) | C21—H21 | 0.9500 |
| O10—N3 | 1.207 (6) | C22—C23 | 1.363 (9) |
| O11—N4 | 1.224 (6) | C22—H22 | 0.9500 |
| O12—N4 | 1.234 (6) | C23—C24 | 1.387 (8) |
| O1W—H2W | 0.84 (5) | C23—H23 | 0.9500 |
| O1W—H1W | 0.84 (5) | C24—H24 | 0.9500 |
| N1—C4 | 1.473 (6) | O1S—C4S | 1.406 (8) |
| N2—C6 | 1.470 (7) | O1S—C1S | 1.410 (8) |
| N3—C11 | 1.489 (7) | C1S—C2S | 1.505 (8) |
| N4—C13 | 1.473 (7) | C1S—H1S1 | 0.9900 |
| N5—C15 | 1.331 (7) | C1S—H1S2 | 0.9900 |
| N5—C19 | 1.336 (6) | C2S—C3S | 1.504 (9) |
| N6—C24 | 1.340 (7) | C2S—H2S1 | 0.9900 |
| N6—C20 | 1.346 (6) | C2S—H2S2 | 0.9900 |
| C1—C2 | 1.514 (7) | C4S—C3S | 1.496 (9) |
| C2—C3 | 1.389 (7) | C4S—H4S1 | 0.9900 |
| C2—C7 | 1.399 (8) | C4S—H4S2 | 0.9900 |
| C3—C4 | 1.394 (7) | C3S—H3S1 | 0.9900 |
| C3—H3 | 0.9500 | C3S—H3S2 | 0.9900 |
| C4—C5 | 1.378 (7) | O2S—C8S | 1.397 (10) |

supplementary materials

| | | | |
|-------------|-------------|---------------|------------|
| C5—C6 | 1.374 (8) | O2S—C5S | 1.401 (10) |
| C5—H5 | 0.9500 | C5S—C6S | 1.503 (10) |
| C6—C7 | 1.376 (8) | C5S—H5S1 | 0.9900 |
| C7—H7 | 0.9500 | C5S—H5S2 | 0.9900 |
| C8—C9 | 1.511 (7) | C8S—C7S | 1.506 (10) |
| C9—C10 | 1.392 (7) | C8S—H8S1 | 0.9900 |
| C9—C14 | 1.388 (7) | C8S—H8S2 | 0.9900 |
| C10—C11 | 1.375 (7) | C7S—C6S | 1.503 (10) |
| C10—H10 | 0.9500 | C7S—H7S1 | 0.9900 |
| C11—C12 | 1.383 (7) | C7S—H7S2 | 0.9900 |
| C12—C13 | 1.376 (8) | C6S—H6S1 | 0.9900 |
| C12—H12 | 0.9500 | C6S—H6S2 | 0.9900 |
| O7—Cu—O1 | 90.62 (16) | C17—C16—C15 | 120.2 (6) |
| O7—Cu—N5 | 93.96 (16) | C17—C16—H16 | 119.9 |
| O1—Cu—N5 | 172.85 (17) | C15—C16—H16 | 119.9 |
| O7—Cu—N6 | 163.43 (16) | C16—C17—C18 | 119.5 (5) |
| O1—Cu—N6 | 94.15 (17) | C16—C17—H17 | 120.3 |
| N5—Cu—N6 | 79.95 (18) | C18—C17—H17 | 120.3 |
| O7—Cu—O1W | 92.59 (18) | C17—C18—C19 | 118.2 (5) |
| O1—Cu—O1W | 86.83 (17) | C17—C18—H18 | 120.9 |
| N5—Cu—O1W | 98.43 (18) | C19—C18—H18 | 120.9 |
| N6—Cu—O1W | 103.51 (19) | N5—C19—C18 | 121.3 (5) |
| C1—O1—Cu | 114.6 (3) | N5—C19—C20 | 114.5 (4) |
| C8—O7—Cu | 117.4 (3) | C18—C19—C20 | 124.2 (5) |
| Cu—O1W—H2W | 89 (6) | N6—C20—C21 | 120.9 (5) |
| Cu—O1W—H1W | 132 (6) | N6—C20—C19 | 114.8 (5) |
| H2W—O1W—H1W | 108 (5) | C21—C20—C19 | 124.3 (5) |
| O3—N1—O4 | 124.7 (5) | C22—C21—C20 | 118.9 (5) |
| O3—N1—C4 | 118.2 (4) | C22—C21—H21 | 120.5 |
| O4—N1—C4 | 117.1 (5) | C20—C21—H21 | 120.5 |
| O5—N2—O6 | 123.4 (5) | C23—C22—C21 | 119.3 (5) |
| O5—N2—C6 | 118.2 (5) | C23—C22—H22 | 120.4 |
| O6—N2—C6 | 118.4 (5) | C21—C22—H22 | 120.4 |
| O10—N3—O9 | 125.7 (5) | C22—C23—C24 | 119.0 (5) |
| O10—N3—C11 | 117.3 (4) | C22—C23—H23 | 120.5 |
| O9—N3—C11 | 117.0 (5) | C24—C23—H23 | 120.5 |
| O11—N4—O12 | 124.2 (4) | N6—C24—C23 | 122.6 (5) |
| O11—N4—C13 | 117.7 (4) | N6—C24—H24 | 118.7 |
| O12—N4—C13 | 118.1 (4) | C23—C24—H24 | 118.7 |
| C15—N5—C19 | 119.9 (5) | C4S—O1S—C1S | 104.5 (8) |
| C15—N5—Cu | 124.8 (4) | O1S—C1S—C2S | 105.4 (7) |
| C19—N5—Cu | 115.2 (3) | O1S—C1S—H1S1 | 110.7 |
| C24—N6—C20 | 119.2 (5) | C2S—C1S—H1S1 | 110.7 |
| C24—N6—Cu | 126.0 (4) | O1S—C1S—H1S2 | 110.7 |
| C20—N6—Cu | 114.5 (4) | C2S—C1S—H1S2 | 110.7 |
| O2—C1—O1 | 126.8 (5) | H1S1—C1S—H1S2 | 108.8 |
| O2—C1—C2 | 118.7 (5) | C3S—C2S—C1S | 103.5 (8) |
| O1—C1—C2 | 114.5 (4) | C3S—C2S—H2S1 | 111.1 |
| C3—C2—C7 | 120.0 (5) | C1S—C2S—H2S1 | 111.1 |

| | | | |
|--------------|------------|----------------|------------|
| C3—C2—C1 | 121.1 (5) | C3S—C2S—H2S2 | 111.1 |
| C7—C2—C1 | 118.9 (5) | C1S—C2S—H2S2 | 111.1 |
| C2—C3—C4 | 118.1 (5) | H2S1—C2S—H2S2 | 109.0 |
| C2—C3—H3 | 120.9 | O1S—C4S—C3S | 110.2 (9) |
| C4—C3—H3 | 120.9 | O1S—C4S—H4S1 | 109.6 |
| C5—C4—C3 | 123.3 (5) | C3S—C4S—H4S1 | 109.6 |
| C5—C4—N1 | 118.9 (5) | O1S—C4S—H4S2 | 109.6 |
| C3—C4—N1 | 117.8 (5) | C3S—C4S—H4S2 | 109.6 |
| C6—C5—C4 | 116.3 (5) | H4S1—C4S—H4S2 | 108.1 |
| C6—C5—H5 | 121.9 | C4S—C3S—C2S | 102.7 (8) |
| C4—C5—H5 | 121.9 | C4S—C3S—H3S1 | 111.2 |
| C7—C6—C5 | 123.6 (5) | C2S—C3S—H3S1 | 111.2 |
| C7—C6—N2 | 118.2 (5) | C4S—C3S—H3S2 | 111.2 |
| C5—C6—N2 | 118.2 (5) | C2S—C3S—H3S2 | 111.2 |
| C6—C7—C2 | 118.7 (5) | H3S1—C3S—H3S2 | 109.1 |
| C6—C7—H7 | 120.7 | C8S—O2S—C5S | 106.1 (17) |
| C2—C7—H7 | 120.7 | O2S—C5S—C6S | 111.5 (18) |
| O8—C8—O7 | 126.0 (5) | O2S—C5S—H5S1 | 109.3 |
| O8—C8—C9 | 119.0 (5) | C6S—C5S—H5S1 | 109.3 |
| O7—C8—C9 | 115.1 (5) | O2S—C5S—H5S2 | 109.3 |
| C10—C9—C14 | 119.5 (5) | C6S—C5S—H5S2 | 109.3 |
| C10—C9—C8 | 119.3 (5) | H5S1—C5S—H5S2 | 108.0 |
| C14—C9—C8 | 121.1 (5) | O2S—C8S—C7S | 109.3 (17) |
| C11—C10—C9 | 119.8 (5) | O2S—C8S—H8S1 | 109.8 |
| C11—C10—H10 | 120.1 | C7S—C8S—H8S1 | 109.8 |
| C9—C10—H10 | 120.1 | O2S—C8S—H8S2 | 109.8 |
| C10—C11—C12 | 121.8 (5) | C7S—C8S—H8S2 | 109.8 |
| C10—C11—N3 | 120.0 (5) | H8S1—C8S—H8S2 | 108.3 |
| C12—C11—N3 | 118.0 (5) | C6S—C7S—C8S | 104.2 (18) |
| C13—C12—C11 | 117.2 (5) | C6S—C7S—H7S1 | 110.9 |
| C13—C12—H12 | 121.4 | C8S—C7S—H7S1 | 110.9 |
| C11—C12—H12 | 121.4 | C6S—C7S—H7S2 | 110.9 |
| C12—C13—C14 | 122.7 (5) | C8S—C7S—H7S2 | 110.9 |
| C12—C13—N4 | 118.5 (5) | H7S1—C7S—H7S2 | 108.9 |
| C14—C13—N4 | 118.8 (5) | C7S—C6S—C5S | 98.9 (18) |
| C13—C14—C9 | 118.7 (5) | C7S—C6S—H6S1 | 112.0 |
| C13—C14—H14 | 120.6 | C5S—C6S—H6S1 | 112.0 |
| C9—C14—H14 | 120.6 | C7S—C6S—H6S2 | 112.0 |
| N5—C15—C16 | 120.9 (6) | C5S—C6S—H6S2 | 112.0 |
| N5—C15—H15 | 119.6 | H6S1—C6S—H6S2 | 109.7 |
| C16—C15—H15 | 119.6 | | |
| O7—Cu—O1—C1 | 84.5 (4) | C14—C9—C10—C11 | 0.5 (7) |
| N5—Cu—O1—C1 | -45.3 (15) | C8—C9—C10—C11 | 179.5 (5) |
| N6—Cu—O1—C1 | -79.6 (4) | C9—C10—C11—C12 | -2.0 (8) |
| O1W—Cu—O1—C1 | 177.1 (4) | C9—C10—C11—N3 | -178.2 (5) |
| O1—Cu—O7—C8 | -109.3 (4) | O10—N3—C11—C10 | 178.4 (5) |
| N5—Cu—O7—C8 | 65.2 (4) | O9—N3—C11—C10 | -0.7 (8) |
| N6—Cu—O7—C8 | -2.4 (8) | O10—N3—C11—C12 | 2.1 (8) |
| O1W—Cu—O7—C8 | 163.8 (4) | O9—N3—C11—C12 | -177.0 (5) |

supplementary materials

| | | | |
|---------------|------------|-----------------|------------|
| O7—Cu—N5—C15 | 20.9 (4) | C10—C11—C12—C13 | 4.0 (8) |
| O1—Cu—N5—C15 | 150.5 (12) | N3—C11—C12—C13 | -179.8 (5) |
| N6—Cu—N5—C15 | -174.7 (5) | C11—C12—C13—C14 | -4.6 (8) |
| O1W—Cu—N5—C15 | -72.3 (5) | C11—C12—C13—N4 | 177.6 (5) |
| O7—Cu—N5—C19 | -156.7 (3) | O11—N4—C13—C12 | 157.4 (5) |
| O1—Cu—N5—C19 | -27.0 (15) | O12—N4—C13—C12 | -21.8 (7) |
| N6—Cu—N5—C19 | 7.8 (3) | O11—N4—C13—C14 | -20.5 (7) |
| O1W—Cu—N5—C19 | 110.1 (4) | O12—N4—C13—C14 | 160.3 (5) |
| O7—Cu—N6—C24 | -113.5 (6) | C12—C13—C14—C9 | 3.3 (8) |
| O1—Cu—N6—C24 | -7.2 (4) | N4—C13—C14—C9 | -178.9 (4) |
| N5—Cu—N6—C24 | 176.9 (4) | C10—C9—C14—C13 | -1.1 (7) |
| O1W—Cu—N6—C24 | 80.6 (4) | C8—C9—C14—C13 | 179.9 (5) |
| O7—Cu—N6—C20 | 60.4 (8) | C19—N5—C15—C16 | 1.3 (8) |
| O1—Cu—N6—C20 | 166.7 (3) | Cu—N5—C15—C16 | -176.1 (4) |
| N5—Cu—N6—C20 | -9.2 (3) | N5—C15—C16—C17 | 0.5 (9) |
| O1W—Cu—N6—C20 | -105.5 (4) | C15—C16—C17—C18 | -0.7 (9) |
| Cu—O1—C1—O2 | 8.5 (7) | C16—C17—C18—C19 | -0.7 (9) |
| Cu—O1—C1—C2 | -171.8 (3) | C15—N5—C19—C18 | -2.9 (7) |
| O2—C1—C2—C3 | -170.3 (5) | Cu—N5—C19—C18 | 174.8 (4) |
| O1—C1—C2—C3 | 10.0 (7) | C15—N5—C19—C20 | 177.1 (4) |
| O2—C1—C2—C7 | 7.8 (7) | Cu—N5—C19—C20 | -5.2 (5) |
| O1—C1—C2—C7 | -172.0 (5) | C17—C18—C19—N5 | 2.6 (8) |
| C7—C2—C3—C4 | 1.3 (7) | C17—C18—C19—C20 | -177.4 (5) |
| C1—C2—C3—C4 | 179.3 (4) | C24—N6—C20—C21 | 2.3 (7) |
| C2—C3—C4—C5 | -1.2 (7) | Cu—N6—C20—C21 | -172.1 (4) |
| C2—C3—C4—N1 | 179.3 (4) | C24—N6—C20—C19 | -176.6 (4) |
| O3—N1—C4—C5 | -161.2 (5) | Cu—N6—C20—C19 | 9.1 (5) |
| O4—N1—C4—C5 | 17.8 (7) | N5—C19—C20—N6 | -2.6 (7) |
| O3—N1—C4—C3 | 18.3 (7) | C18—C19—C20—N6 | 177.4 (4) |
| O4—N1—C4—C3 | -162.7 (5) | N5—C19—C20—C21 | 178.6 (4) |
| C3—C4—C5—C6 | 0.4 (7) | C18—C19—C20—C21 | -1.4 (8) |
| N1—C4—C5—C6 | 179.9 (4) | N6—C20—C21—C22 | -1.2 (8) |
| C4—C5—C6—C7 | 0.3 (8) | C19—C20—C21—C22 | 177.5 (5) |
| C4—C5—C6—N2 | 178.6 (5) | C20—C21—C22—C23 | -0.5 (8) |
| O5—N2—C6—C7 | -2.9 (8) | C21—C22—C23—C24 | 1.1 (8) |
| O6—N2—C6—C7 | 176.9 (5) | C20—N6—C24—C23 | -1.7 (7) |
| O5—N2—C6—C5 | 178.7 (5) | Cu—N6—C24—C23 | 172.0 (4) |
| O6—N2—C6—C5 | -1.5 (8) | C22—C23—C24—N6 | 0.0 (8) |
| C5—C6—C7—C2 | -0.2 (8) | C4S—O1S—C1S—C2S | 37.4 (10) |
| N2—C6—C7—C2 | -178.5 (5) | O1S—C1S—C2S—C3S | -34.0 (10) |
| C3—C2—C7—C6 | -0.6 (8) | C1S—O1S—C4S—C3S | -26.8 (13) |
| C1—C2—C7—C6 | -178.7 (5) | O1S—C4S—C3S—C2S | 5.2 (14) |
| Cu—O7—C8—O8 | -2.2 (8) | C1S—C2S—C3S—C4S | 16.9 (12) |
| Cu—O7—C8—C9 | 177.9 (3) | C8S—O2S—C5S—C6S | 17 (2) |
| O8—C8—C9—C10 | 1.5 (8) | C5S—O2S—C8S—C7S | 4(2) |
| O7—C8—C9—C10 | -178.6 (5) | O2S—C8S—C7S—C6S | -23 (3) |
| O8—C8—C9—C14 | -179.6 (5) | C8S—C7S—C6S—C5S | 30 (3) |
| O7—C8—C9—C14 | 0.3 (7) | O2S—C5S—C6S—C7S | -30 (3) |

Hydrogen-bond geometry (Å, °)

| <i>D</i> —H··· <i>A</i> | <i>D</i> —H | H··· <i>A</i> | <i>D</i> ··· <i>A</i> | <i>D</i> —H··· <i>A</i> |
|------------------------------|-------------|---------------|-----------------------|-------------------------|
| O1w—H1w···O2 ⁱ | 0.84 (5) | 2.01 (6) | 2.766 (6) | 150 (7) |
| O1w—H2w···O8 ⁱ | 0.84 (5) | 2.35 (7) | 3.048 (6) | 141 (6) |
| C18—H18···O8 ⁱⁱ | 0.95 | 2.17 | 3.060 (7) | 155 |
| C21—H21···O2 ⁱⁱ | 0.95 | 2.41 | 3.087 (7) | 128 |
| C15—H15···O9 ^j | 0.95 | 2.43 | 3.285 (7) | 150 |
| C1s—H1s2···O7 | 0.99 | 2.53 | 3.451 (10) | 155 |
| C3—H3···O1s | 0.95 | 2.58 | 3.520 (8) | 169 |
| C2s—H2s2···O11 | 0.99 | 2.49 | 3.385 (11) | 150 |
| C5—H5···O4 ⁱⁱⁱ | 0.95 | 2.58 | 3.360 (7) | 140 |
| C12—H12···O12 ⁱⁱⁱ | 0.95 | 2.43 | 3.263 (7) | 146 |
| C16—H16···O12 ^{iv} | 0.95 | 2.47 | 3.234 (8) | 138 |

Symmetry codes: (i) $x, y, z-1$; (ii) $-x+1/2, y, z-1/2$; (iii) $-x+3/2, y, z+1/2$; (iv) $-x+1, -y+2, z-1/2$.

Fig. 1

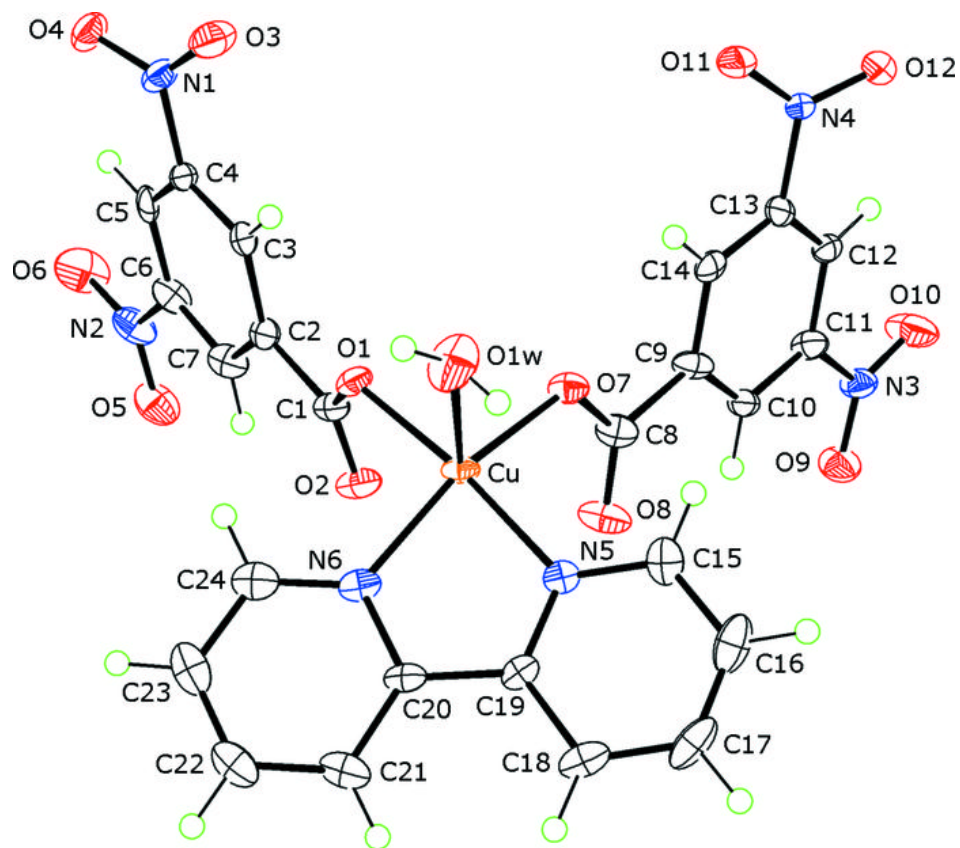


Fig. 2

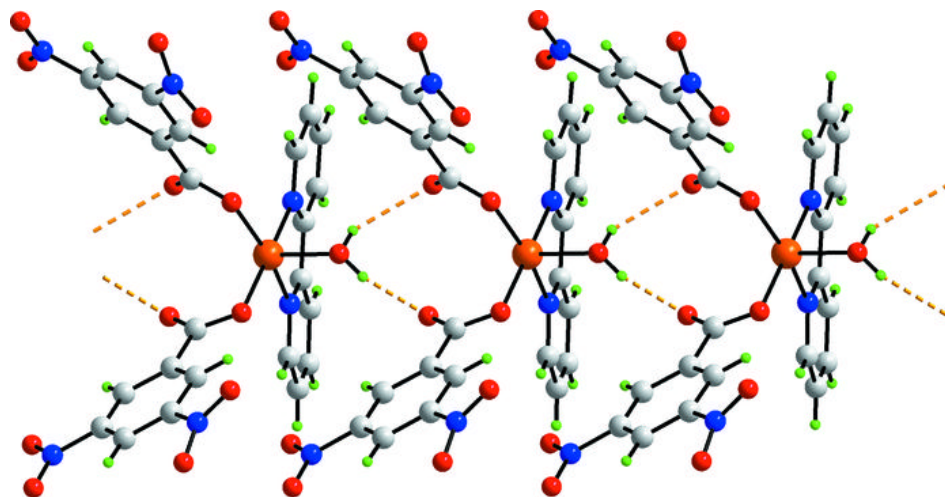


Fig. 3

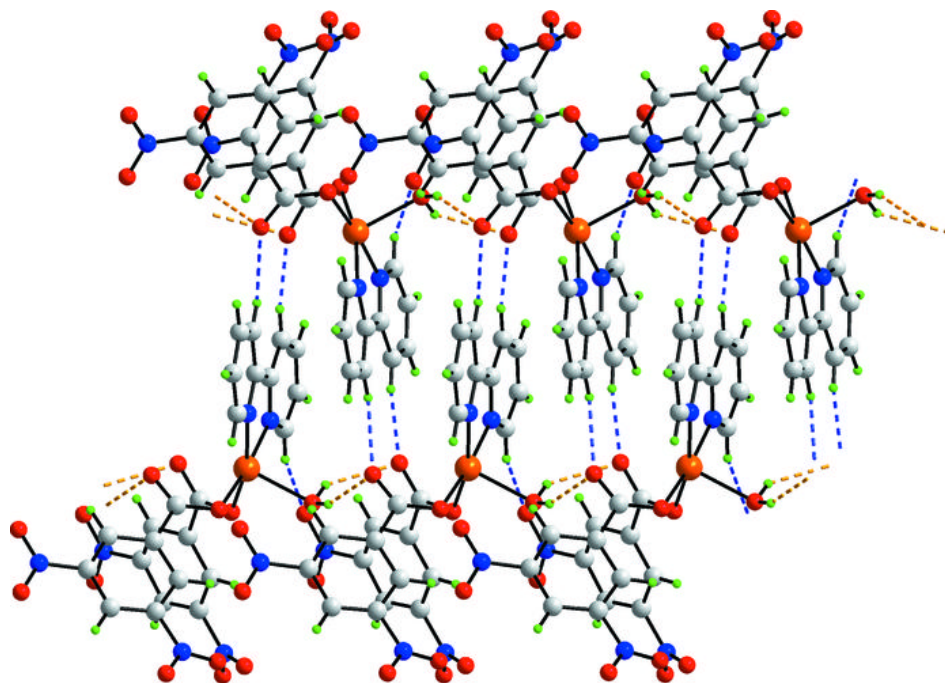


Fig. 4

